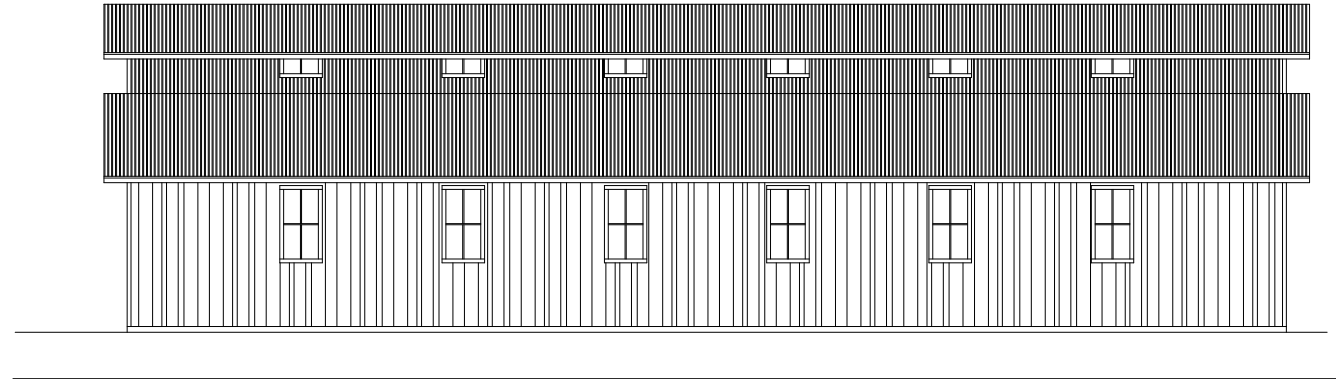
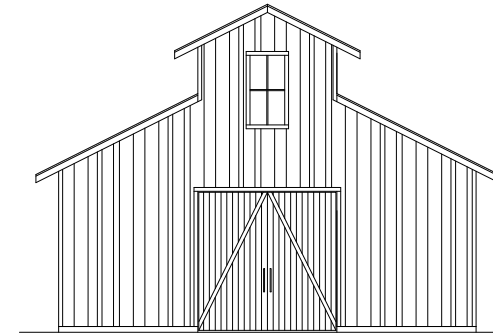


# AMADOR COUNTY MUSEUM LIVERY STABLE PROJECT

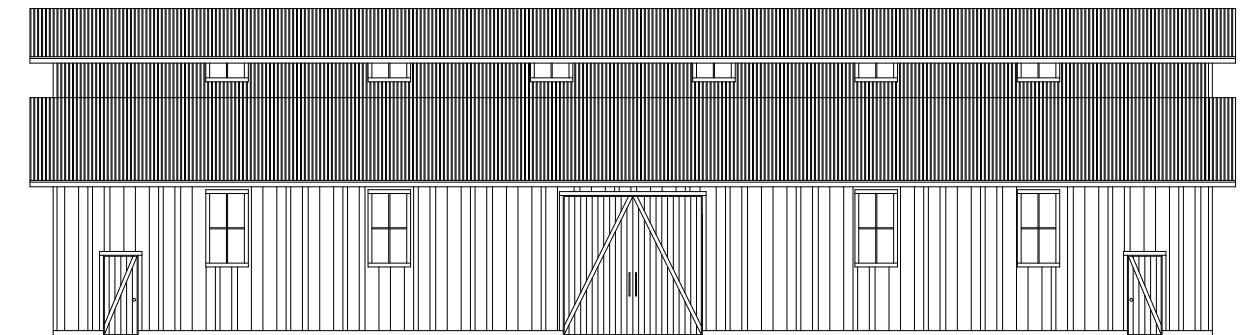
225 CHURCH STREET, JACKSON CALIFORNIA  
DECEMBER, 2016



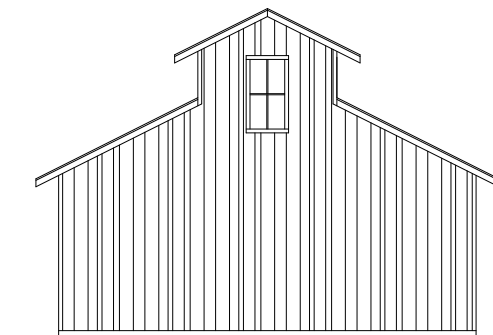
WEST ELEVATION



SOUTH ELEVATION



EAST ELEVATION



NORTH ELEVATION

## CONCEPT A PRELIMINARY BUILDING ELEVATIONS

SCALE: 1/8" = 1'-0"